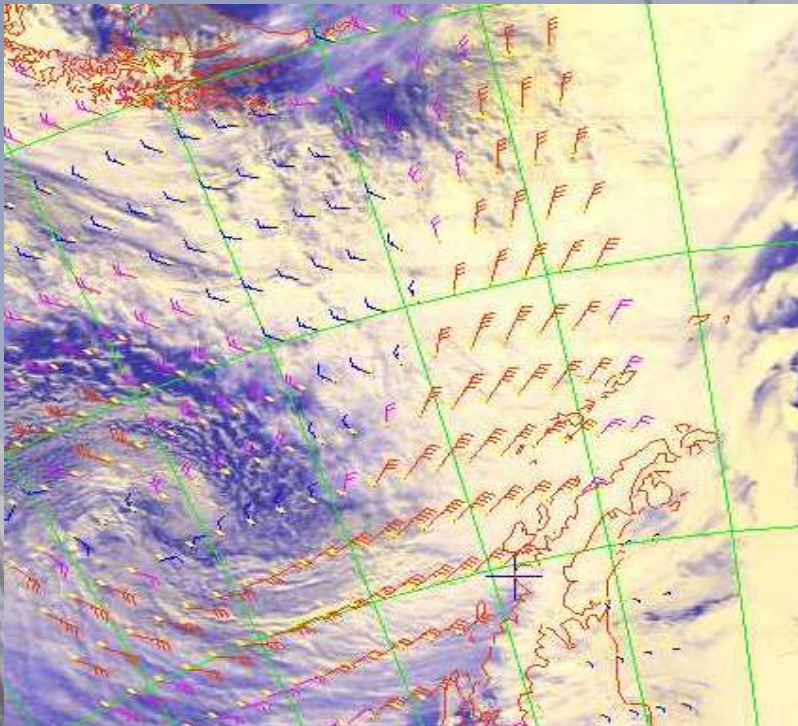


SkyEye: "No Surprises with the Weather"

The Drake passage is one of the most notorious stretches of water. Almost 500 miles wide, it separates The South American Sub continent from the Antarctic peninsula. Good reliable weather information is critical in these treacherous waters.

A SkyEye Picture with a Wind Grib overlay.



By overlaying the current Internet Computer model on the satellite image you can quickly and easily evaluate the data and see if the model reflects reality.

"The trip was a huge success. The technology worked and we had no surprises with the weather. The expedition proceeded, peaks were climbed aided by reliable weather, primarily Satellite image based as visibility was a prime concern. Boat movements were scheduled up to two days in advance to ensure the boat entered the treacherous rock strewn anchorages in calm weather and that the boat was securely tied to the shore for the three storms we encountered"

Northanger Antarctica 2003 Expedition

System Description

SkyEye is the most advanced concept in APT weather satellite reception and is the choice of the World's major navies and fishing fleets plus it is gaining great popularity with the commercial shipping and recreational boating market. It's total ease of installation has made it the most advanced system of it's type.

Features:

- Overlay of Wind Grib files
- Vessel tracking on the photo
- Integrated world wide depth and elevation database
- Enhanced color definition tools for accurate location of temperature differences.

Complete package includes:

- Software CD
- Printed Manual
- Half Wave Quadrifilar antenna / Receiver with built in GPS
- 15 M data cable from antenna to USB junction box
- 2 M cable 2 computer.
- No External Power or connections.

Contact

SkyEye Systems Ltd
PO Box 1 West Park Village
West Harbour
Auckland 1250
New Zealand
xax@xaxero.com
64 9 412 7580
www.skyeye.co.nz